

Lambethtalk

YOUR FREE LAMBETH COUNCIL MAGAZINE

AUTUMN 2024



Bike the borough Fun on two wheels

BIKE THE BOROUGH / p8
Cycling is fun!

**LAMBETH HERITAGE
FESTIVAL** / p10
Over 80 events in September

COST OF LIVING / p14
Find out how we can
support you

CODING FOR WOMEN / p21
Your career in technology

ACTIVE LAMBETH / p2
New activities for juniors

SANCTUARY SERVICES / p15
International classes
for newly arrived


Lambeth

BACK TO SCHOOL



Find the best junior activities in Lambeth

Discover junior activities at Active Lambeth! From swimming to soft play, there's something for everyone.

- ✓ Swimming lessons
- ✓ Gymnastics courses
- ✓ Soft play and climbing wall
- ✓ Holiday club



Swimming lessons from £23.50 per month

Active Lambeth Swim School classes and courses

- STA kids swimming lessons
- Half term swim crash courses
- Parent and baby classes
- SEND inclusive sessions
- Adult swim classes



Visit active.lambeth.gov.uk or scan to the QR code to find out more



Welcome to Autumn's edition

Dear residents,

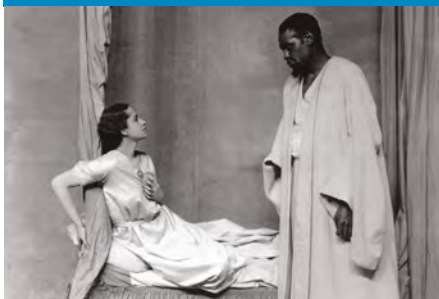
London is suffering a major housing crisis. Whilst 14 years of austerity and a failure of national government to invest have restricted our ability to build at pace, we have still made great progress in doing what we can for the most vulnerable in Lambeth.

From clamping down on rogue landlords, building the first council homes in a generation, to our leading work in tackling street homelessness and rough sleeping, we continue to meet these challenges head on. But we need the new government to help, which is why we welcome the announcement that housebuilding is a top priority. Introducing new targets, planning reforms and opening up more space to build, will support us to deliver the homes our residents need.

We will continue to tackle these challenges, bringing together voices and organisations from across our borough to deliver for Lambeth residents.

Cllr Claire Holland, Leader of Lambeth and Chair of London Councils

In this issue...



LAMBETH HERITAGE p10-11



NEWS p4-6



BIKE THE BOROUGH p8-9



BLACK HISTORY MONTH p12



NEXT US p13



COST OF LIVING p14



CLASSES p15

For translation of articles in any other language, large print format, or to opt-out from receiving the magazine contact: lambethtalk@lambeth.gov.uk

Edited and designed by the Lambeth Communications team. Contact us: communications@lambeth.gov.uk



FOSTERING p16-17



PHARMACY p19



APPLY FOR SCHOOLS p24

NEWS

Lambeth demonstrates its ongoing commitment to the Living Wage

Lambeth Council is continuing its work to tackle inequality and ensure local people get fair pay as it works towards becoming a Living Wage Place next year.

A Living Wage Place is somewhere paying employees the Living Wage is the norm. In Lambeth hundreds of employers have already signed up to London Living Wage which is an hourly rate of pay, currently set at £13.15.

The council has been working with local businesses, charities and community leaders since June as part of a Living Wage Action Group. The group has now created an Action Plan which is a vital first step on the path to

making Lambeth a Living Wage Place by 2025.

Cllr Marcia Cameron, Lambeth Cabinet Member for Economic Inclusion, said: "The Living Wage is so important in tackling poverty wages and also benefits businesses, helping with staff recruitment, retention and boosting customer confidence.



Lambeth Council secures Top 100 spot on Stonewall's list leading LGBTQ+ inclusive employers

Lambeth Council has been recognised by the LGBTQ+ charity Stonewall as one of the Top 100 employers for inclusivity and support for staff.

The council was ranked 79 out of 246 organisations entering this year, winning a silver award, being recognised for working towards creating an inclusive working environment, and moving up from 166th in 2022 into Stonewall's Top 100 Employers.

Progress on building hundreds of new homes

Lambeth Council plans to build more than 350 new homes in Brixton, more than half of which will be affordable, have taken a big step forward.

The council is set to work with Higgins Group on the second phase of development in Somerleyton Road under proposals for a net-zero development of 363 new homes, of which 54 percent, 195 homes, would be affordable and 138 of these would be for social rent.

The development partner was

chosen through a procurement process for the scheme and will build on the first phase of the Somerleyton Road project which saw significant local projects completed. Those included the opening of the new Brixton House theatre built and the refurbishment of the locally listed Carlton Mansions.

The second phase of development, which is still subject to planning permission being granted, also includes plans for 63 extra care homes, a two-storey

standalone community gym and improvements and upgrades to Somerleyton Road itself.

Deputy leader Councillor Danny Adilypour, Cabinet Member for Housing, Investment and New Homes said: "This proposal also exceeded our affordable and extra care homes targets, which is a real achievement at a time when the spike in inflation has made building so much more expensive, and when every single new affordable home matters in Lambeth."



Lambeth on track to become a child-friendly borough

Lambeth Council's Child Friendly programme has been praised for its work as it continues its journey towards becoming a UNICEF Child Friendly Community.

Lambeth Council is working with the UK Committee for UNICEF (UNICEF UK) Child Friendly Cities & Communities programme to gain the status of a child-friendly borough.

Councillor Kind, Cabinet Member for Families, Children

and Education, and Councillor Judith Cavanagh, met with a team from UNICEF UK's Child Friendly Cities & Communities (CFC) to review the council's progress.

Lambeth Council was praised across several areas, highlighting the "exceptional efforts" made to involve young people in development and design of our regeneration initiatives.

Councillor Ben Kind, Cabinet Member for Children, Families and Education said: "We're

absolutely thrilled with the outcomes of our collaboration with UNICEF UK. The dedication and hard work poured into this programme have been phenomenal.

"What truly stands out is how the voices of our children and young people have directly shaped our focus on safety and security."

For more information visit unicef.org.uk/cfc

NEWS



Youth housing support scheme wins prestigious award

The council has won an award for its work to tackle homelessness and rough sleeping after its Young People’s Supported Housing Commissioning Team were named among the winners of the 2024 London Homelessness Awards.

The team’s “Routes to Independence Pathway” is one of three winning projects out of 35 entries and will be awarded a share of the £60,000 prize fund. The scheme has been designed in collaboration with young service users and expert housing organisations and charities. The wide range of services on offer provide stability and support for young people in Lambeth to develop the skills they need to transition to independence.

Two Green Flag Awards to Brixton and Streatham parks

Lambeth has added two new parks and open spaces to its list of Green Flag Awards after Brixton’s Rush Common and Streatham’s Unigate Wood were both recognised by the national body.

Lambeth has retained its 23 Green Flag Award-winning parks and green spaces, two Green Heritage Award-accredited sites, and four sites with a Green Flag Community Award after the annual assessment by Keep Britain Tidy.

Cllrs Nanda Manley-Browne and Fred Cowell, joint Cabinet Members for Equalities, Governance and Change said: “We are delighted that Rush Common has won Green Flag accreditation this year for the first time.

Today we are also announcing that Unigate Wood between Streatham and West Norwood has also won one. Lambeth now has 25 green flag awards in total – our highest ever number.



Rush Common, opposite the new Lambeth Archives on Brixton Hill, won a green flag.

WORLD CAR FREE DAY CELEBRATION

Saturday 22 September from 1pm to 5pm
Kennington Oval, Vauxhall, SE11 5TR



Come down to this family-friendly event to celebrate all things active travel!

There will be skateboarding try-outs, a smoothie bike, music, adapted bike sessions, free bike checks with Dr Bike and more!

We are also hosting a led bike ride from South Bank to Kennington Oval where you can join the festivities.

Everyone is welcome!

Scan the QR code to sign up to the ride




Lambeth

#BIGSHIFT

Bike the Borough

Hundreds of Lambeth school children took part in the annual ride-out from Brockwell Park to The Oval cricket ground – as they were cheered by onlookers while they put their bike skills to the test.





Pupils from 14 Lambeth primary schools took part in the three-mile ride to let them show off bike skills and gain more confidence when cycling through the borough.

The event was organised by Lambeth Council's Big Shift programme and supported by Cycle Confident and the charity Wheels for Wellbeing. During the day professional traffic marshals kept the route clear of traffic, while experienced instructors were on hand to support the youngsters during their ride.

They were cheered on by passing motorists as they cycled north through central Brixton before arriving at The Oval for lunch where they even had the chance to get onto the famous grass.

Each school received a certificate that was presented by Mayor of Lambeth Councillor Jean-Paul Ennis and Wheels for Wellbeing director Isabelle Clement.

Deputy leader Cllr Rezina Chowdhury, cabinet member for Sustainable Lambeth and Clean Air, said: "Events such as Bike the Borough show what is possible when we make space for people on our streets.

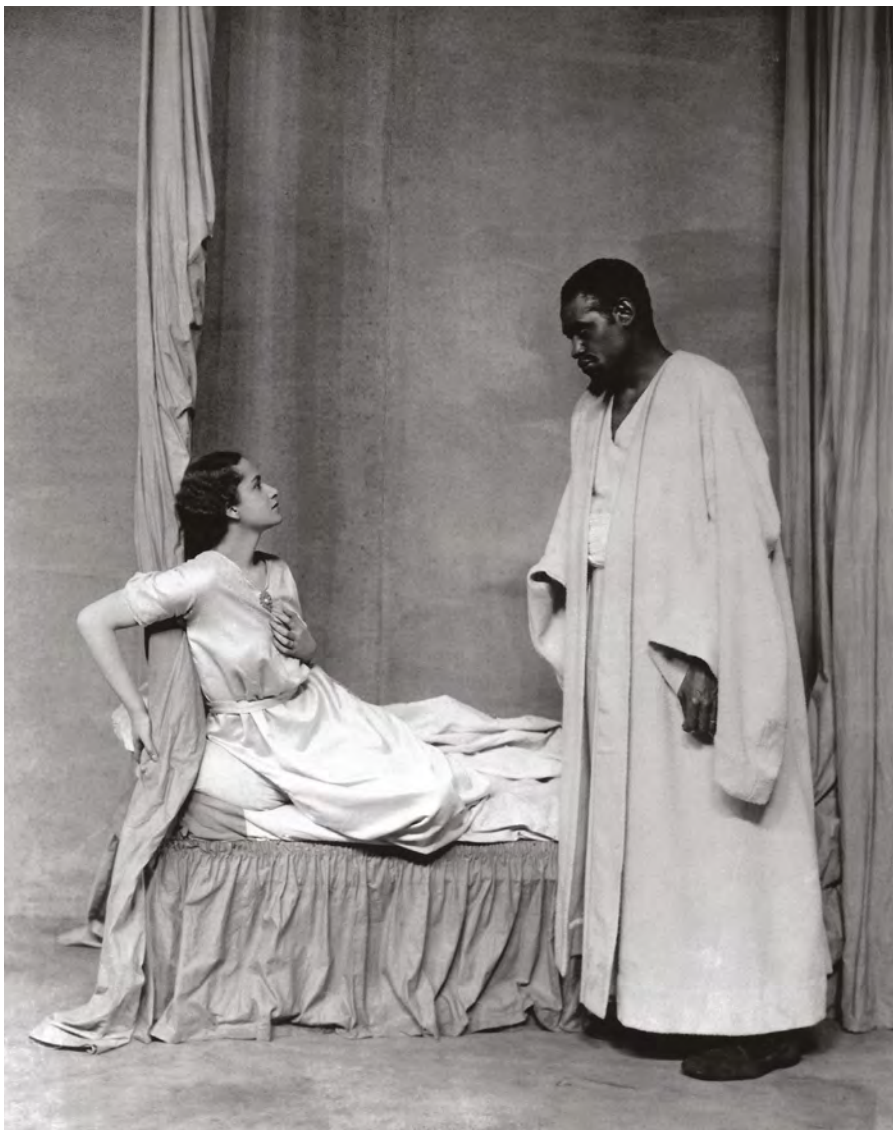
"The young people have been learning about bike skills and cycle confidence throughout the school year, so it was fantastic they have been able to put that knowledge into practice in such a safe environment. This is crucial to showing young people the benefits of cycling both as a way of getting around and to help their health and wellbeing."



LAMBETH HERITAGE FESTIVAL

Shakespeare in Lambeth

In September our annual festival will be celebrating and sharing the rich history and heritage of our borough.



Paul Robeson and Peggy Ashcroft in Othello at Streatham Hill theatre in 1930. At the time, Robeson was still only the fourth Black actor to have performed the role in Britain.

With a varied line up and attractive mix of more than 80 events, Lambeth's Heritage festival should offer something for everyone: author events, film screenings, exhibitions, walks and workshops, each uncovering a different aspect of our collective histories.

The festival kicks off with the **Lambeth Local History Fair at St Leonard's church Streatham on Saturday 7th September** with a programme of walks, talks and exhibitions running through the day and where you can meet members of the **Lambeth Local History Forum** to learn about their work and how you might join in. Local history publications will be on sale.

For the rest of the month the festival covers just about every historical and geographical perspective. There are talks about **South London's lost rivers, the history of Ovalhouse theatre and the women artists at Doulton's Pottery**. There are **online workshops on family history** and an **urban sketching tour of Brixton**. The large programme of guided walks will take you into the hidden corners of our extraordinary borough,

including tours of **Brixton Market**, **St Leonard's crypt**, an architecture walk exploring **Streatham's Art-Deco heritage**, history walks in **Norwood, Lambeth and Streatham Cemeteries** as well as **Kennington Park, Brixton Windmill** and **Henry Tate's gardens**, not to mention a tour of Brixton through the eyes of the Windrush generation. The more energetic can opt for a 6-mile pilgrimage between the churches of St Matthew, Mark Luke and John (each celebrating their 200th anniversary this year) or a 16-mile cycle tour around the ancient parish of Lambeth in the footsteps of the eighteenth century churchwardens beating the bounds.

Lambeth Archives is celebrating the return of the borough's three **Shakespeare folios** (on loan to the British Library for the last 75 years) with its exhibition, Shakespeare in Lambeth, which highlights some of the key Shakespeare moments in Lambeth's theatres: from Richard III performed on horseback at Astley's Amphitheatre where the horse, not the actor, was the star of the show through to Lilian Baylis's revival of Shakespeare at the Old Vic during the First World War, on to more recent innovative productions at the National Theatre.

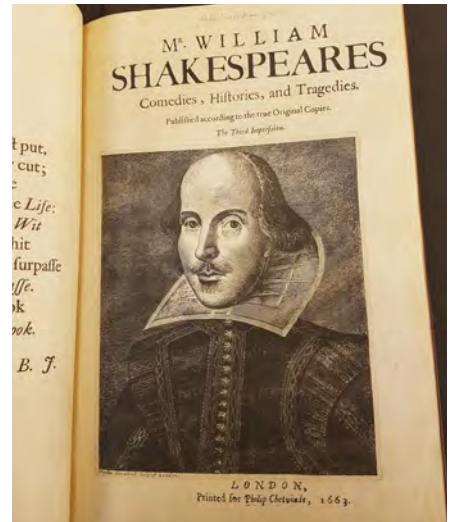
You can download the full programme by scanning the QR code or pick up a copy of the printed programme from any one of Lambeth's libraries.



Lilian Baylis reinvented serious Shakespeare performance in Lambeth at the beginning of the 20th century at the Old Vic theatre.



"Abbeville Village, the making of an Edwardian neighbourhood" is just one of the dozens of history walks taking place during the festival.



Lambeth's copy of the third folio of 1663. This is actually the rarest of all the Shakespeare folios because so many were destroyed in the Great Fire of London, three years later.

BLACK HISTORY MONTH

BlackHistoryMonth

Lambeth celebrates Black History Month this October with more than 40 events in our libraries

Book readings, writers in conversation, Q&As, theatre performance, wellbeing and culture events and spoken word evenings, film screenings, discussions and visual arts are all events taking place this month.

Word from the Cabinet

Cllr Donatus Anyanwu, Cabinet Member for Stronger Communities, Leisure and Sport, said: 'I hope you will join us as we celebrate African and Caribbean history and heritage, celebrating our ongoing

support for the Windrush generation. The whole month is a wonderful opportunity to discover and celebrate the wide variety of vital contributions to Lambeth's culture.

Lambeth Libraries has partnered with many local organisations, along with a selection of brilliant writers and artists, to deliver this fantastic programme of events.'

A world of knowledge

You'll have the chance to discover writers' thoughts and words -

including history, biography and celebrating creativity with new fiction and poetry by and about African and Caribbean people.

Reading and writing for young people

There are events for young readers throughout the month including a chance to meet authors and graphic novel illustrators. There are quizzes, challenges and events for schools, plus recommendations from our libraries for books for and from young readers.



You can choose your own Black History Month menu with the help of a day-to-day guide to all the events, times, booking details and more. Scan the QR code to see Lambeth's information pages online, or collect a printed copy from your local library.



**ARE YOU 16-24?
A RESIDENT OF
LAMBETH?
NOT SURE WHAT
TO DO NEXT?
WANT TO EXPLORE
PATHWAYS INTO
CREATIVE & DIGITAL
CAREERS?**

WHY NOT SIGN UP FOR OUR NEXT US PROGRAMME TO GET ACCESS TO PAID OPPORTUNITIES,
GUIDANCE FROM EXPERIENCED PROFESSIONALS AND AN INSIGHT INTO
THE CREATIVE AND DIGITAL INDUSTRIES.

TO FIND OUT MORE ABOUT THE PROGRAMME AND REGISTER YOUR INTEREST,
PLEASE GO HERE.



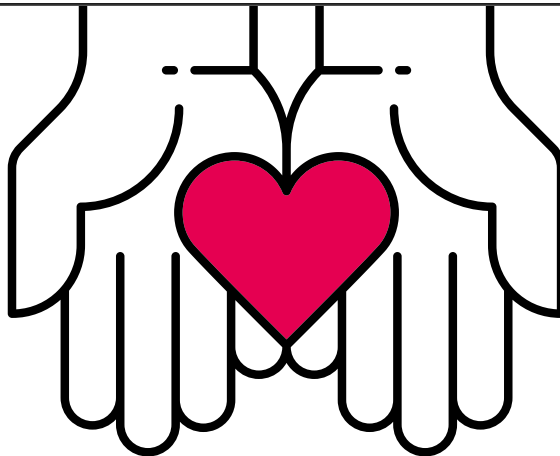
Funded by
UK Government

SUPPORTED BY
MAYOR OF LONDON



SUPPORT

Cost of Living



Many residents are continuing to struggle with increases in the cost of living. You may be eligible for support that you are not claiming. Below are things you can do to help reduce your costs and increase your income. You can find more on: www.lambeth.gov.uk/costofliving



Check to make sure you're not missing out on benefits

Up to 7 million people in the UK are eligible for benefits but not claiming them. Use a benefits calculator to see whether you are one of them: <https://www.gov.uk/benefits-calculators>

There are also local benefits that can help you with paying council tax and housing costs. You can find out whether you are eligible on our website: www.lambeth.gov.uk/extra-support



Improve the energy efficiency of your home and apply for discounts

You can register for an appointment with Groundwork, who work in partnership with the council. They can provide advice on decreasing your energy bills and improving the energy efficiency of your home: <https://london.greendoctors.org.uk/>



Get help with food costs

There are many places in Lambeth where you can access food in a crisis or a sit-down meal at a community centre. The Lambeth Larder website has a directory of the support available: <https://www.lambethlarder.org/>



Get help with health costs

The NHS provides support for those on a low income who require health treatments that are usually paid for, including prescriptions, dental and eye treatments as well as transport to appointments. More details can be found: bit.ly/low-income-scheme
The Pharmacy First scheme also supports residents in receipt of means tested benefits with free, over the counter treatments for minor ailments in 33 pharmacies in the borough. More details can be found: bit.ly/pharmacy-first



Move to a social tariff

Social tariffs are cheaper broadband and phone packages for people claiming some benefits. You can see information about the tariffs available to you on the Ofgem website: bit.ly/cheaper-packages



Seek debt advice

If you're currently in debt, we'd recommend you speak with one of the boroughs advice agencies: www.lambeth.gov.uk/get-benefits-advice

You can also contact StepChange on 0800 138 1111.

Financial pressures can cause many residents anxiety, stress or depression. If you are concerned about your mental health, please speak to your local GP or health service. You can also contact Mind's Information Line for details on support available near you by calling 0300 123 3393.

The council also has a range of support available to residents struggling with the cost of living. You can find out about support you might be entitled to and other information on our website: www.lambeth.gov.uk/costofliving

A PLACE WE CAN CALL HOME



International classes for newly arrived pupils

Young people from asylum seeking, refugee and migrant backgrounds are set to benefit educationally in Lambeth with the introduction of extra support around key academic subjects at three schools in the borough from the autumn term.

The borough's new International Classes initiative for 14- to 16-year-old pupils at Key Stage 4 will also help them integrate into school life faster and ensure their educational needs are fully met.

Lambeth Council has had Borough of Sanctuary status awarded by the City of Sanctuary UK organisation, a charity working to build a more welcoming UK for people forced to flee their

homes. It means Lambeth is officially recognised as a place that welcomes and values the contribution of refugees, migrants and those seeking sanctuary.

Cllr Ibtisam Adem, Lambeth Council's Policy Lead for Sanctuary Seekers and Migrants, said: "Many children and young people who arrive in the UK have endured severe trauma and disruptions to their academic studies. This programme is a step in the right direction to giving them access to something as essential as education."

The International Classes initiative starts in the autumn term at **The Elmgreen School, The Norwood School** and **Trinity Academy**.

Three Lambeth secondary schools offer extra support from September.

The pilot schools are among the borough's most inclusive.

The students will get intensive support in English as an Additional Language and other core subjects in the International Classes. The curriculum will be personalised to help them quickly adapt to the English education system so they can progress academically and build the confidence and skills necessary to thrive in their new environment. The schools will also help the pupils in deciding their plans after leaving school, including higher education and employment.

Families with children eligible for these classes are advised to follow the standard admissions process.

Can you become an Emergency Foster Carer for a Lambeth child?



What is emergency fostering?

Emergency fostering provides short-term care for children and young people who need a place to stay. Often, this can come at short notice, as the children in need of emergency care may have been exposed to an unsafe environment, a sudden illness in the family or other unanticipated situations.

EDT is the out of hours social care service and operates from 5.30pm until 8.45am weekdays and throughout the weekends and bank holidays.

Why do children need emergency foster care?

Some of the reasons why children would need emergency foster care could be due to drug or alcohol misuse, as well as any physical or mental health problems. However, sometimes the parents of the children simply cannot cope with the demands of caring for a child.

Having the option of emergency fostering allows these young people to be transferred into a safe environment, while Social Workers can assess the situation in the family home and decide on the next best steps for the child in foster care.

Age Range	Child's Fostering Allowance	Carer's Fostering Payment	EDT Placement payment	Retainer Payment for being on the EFCS rota (if no placement is refused)	Total Allowance Per Week
0 - 2 years	£179.00 P/W	£252.00 P/W	£200.00 P/W	£100.00 P/W	£731
3 - 4 years	£182.00 P/W	£252.00 P/W	£200.00 P/W	£100.00 P/W	£734
5 - 10 years	£203.00 P/W	£252.00 P/W	£200.00 P/W	£100.00 P/W	£755
11 - 12 years	£232.00 P/W	£252.00 P/W	£200.00 P/W	£100.00 P/W	£784
13 - 15 years	£237.65 P/W	£252.00 P/W	£200.00 P/W	£100.00 P/W	£789
16 - 17 years	£270.00 P/W	£252.00 P/W	£200.00 P/W	£100.00 P/W	£804

What does an Emergency Foster Carer do?

As an Emergency Foster Carer, your role will typically be one that is transitional, preparing the child for their next steps. These placements won't last longer than 7 calendar days, to avoid blocking an emergency placement. Please note that the maximum duration for emergency placements is 14 calendar days.

Emergency Foster Carers will be paid a £100 a week retainer when on the EDT rota/actively considering EDT placements. You will also receive an additional amount of £200 per week, each time an emergency placement is made from out of office hours, in recognition of the additional disruption to the household.

Requirements

You must be prepared and equipped to receive children in crisis at short notice and expect a higher level of social work involvement, meetings and appointments (e.g. medical etc), during the placement. We require at least 28 days' notice if you decide you no longer wish to be part of this scheme.

Please contact us today for an informal chat and more information:

Call: 020 7926 8710 | Email: fosteringduty@lambeth.gov.uk

Find out more: www.lambeth.gov.uk/foster



Be the difference.



MEASLES IS MISERY

**Has your child had the MMR vaccine?
Just two doses provide lifelong
protection.**

Find out more at www.nhs.uk/mmr



Your local pharmacist

Here to help!



**Claire Grant, Pharmacy
Manager at Day Lewis,
Streatham**

“As the days get shorter and temperatures start to drop, it’s important we look after our health, especially if we have existing health conditions that might make us more vulnerable to seasonal bugs. Your local pharmacy is here to make this easier than ever before. Pharmacists like me are highly trained and expert in medicines. Here are my top tips for making the most of your local pharmacist this autumn.

Appointment-free support

“Community pharmacies offer

a convenient way to get clinical advice on minor health concerns. You don’t need an appointment, and we can see you in a separate consultation room for privacy. We can also signpost you to other local services if needed.

Quick and effective treatment

“Your pharmacist can prescribe medication for some of the most common health conditions. This includes earaches in children, sore throat, shingles, impetigo, sinusitis, and urinary tract infections in women aged 16-64. No need to wait for a GP appointment!

Seasonal vaccinations

“Many local pharmacies will be offering free flu and COVID-19 vaccinations to those most at risk of serious illness this autumn. As protection against these viruses can fade over time, it’s important to top it up before winter comes to help you stay well. The NHS will contact you if your NHS record suggests you’re eligible

for a seasonal vaccination. I’d recommend you book without delay for maximum protection against these viral infections.

Blood pressure checks

“If you’re aged 40 or above, free blood pressure checks are available. It’s a proactive way to monitor your health and find potential issues early on, helping you to stay in control of your health.”

Find your local pharmacy:
[www.nhs.uk/nhs-services/
pharmacies](http://www.nhs.uk/nhs-services/pharmacies)



Don’t wait for minor health concerns to get worse – think pharmacy first, and get seen by your local community pharmacy team. We’re here to help!

Ageing Well Festival 2024

A fun and social day with free food, information stalls, a tea dance, activities and crafts for residents aged 50+

This is a free drop in event – no ticket needed. Families and carers welcome.

5th October 2024, 11am to 3pm at Jardine Suite (Alec Stewart Gate), Harleyford Road, The Oval Cricket Ground, SE11 5SS Buses 36, 185 and 436 stop on Harleyford Road near the Alec Stewart Gate and can be caught at Oval or Vauxhall Stations which are within walking distance.

For more information or if you have accessibility requirements see our webpages

www.lambeth.gov.uk/age-friendly-lambeth/events
or email **agefriendly@lambeth.gov.uk**



Women's coding sessions in Brixton

By Rev Gail Thompson

There's a shortage of women coders in the UK. Our new coding classes in Brixton offer a fantastic future career opportunity for those who learn to code at any age.

Launched by Millennium Community Solutions, the success of our first women-only coding programme has been met with enthusiasm, demonstrating women in Lambeth's eagerness to embrace technology.

In partnership with Lambeth's

Youth Justice Service and Resident Engagement Team, we are extending the invitation to women interested in upskilling or learning Python and essential coding skills.

The next 12-week course starts in September and is AQA accredited,

ensuring participants receive a recognised qualification. The programme welcomes beginners as well as those looking to advance their careers.

This initiative not only empowers women of all ages but also bridges the digital divide, creating a more inclusive tech community. Sign up now to embark on a new learning journey!

Register now by scanning the QR code.



Quick and easy ways to take control of your sexual health

- ✓ Get routine and emergency contraception without prescription from pharmacies or online at www.shl.uk
- ✓ Test for STIs with a home test kit from www.shl.uk or at walk-in clinics
- ✓ Prevent HIV with PrEP medication available at sexual health clinics
- ✓ Free condoms for young people under 25 with Come Correct



All sexual health services are free and confidential!
Find out more at www.findsexualhealth.co.uk



#SexualHealthWeek
9-15 September 2024



New property licensing scheme

Lambeth's new property licensing scheme is designed to tackle rogue landlords and improve conditions for people living in private rented accommodation.

Landlords will need a licence to legally let any property to a single-family household or no more than two unrelated sharers, in four specified wards.

The selective licensing scheme was approved by Lambeth's Cabinet in May, in a bid to improve property conditions and management, and tackle problems including anti-social behaviour (ASB) and deprivation.

It means landlords will need a licence and meet the conditions

associated to legally let qualifying properties in "Selective Licensing Designation 1": **Knights Hill, Streatham Common and Vale, Streatham Hill East, and Streatham St Leonards.**

A report presented to the Cabinet said the scheme was also in line with the council's Borough Plan commitment to make Lambeth a place we can all call home.

It added: "In terms of the PRS [Private Rented Sector], this includes not only tackling rogue landlords, but also supporting good landlords and tenants. Selective Licensing can be used to achieve these objectives."

Around a third of the 144,985 residential dwellings in Lambeth are

in the Private Rented Sector, and official data has shown that over 9,446 of these are predicted to have a serious home hazard. The council has also received over 10,000 complaints of ASB-related incidents in the PRS over a three-year period.

Responses received during a 12-week consultation suggested that almost two-thirds of residents and local businesses approved of introducing licensing in the first four wards – and the 19 earmarked in the second phase.

Each licence will cost £923, covering the cost of administering the licence over a five-year period, and managing and enforcing the licensing regime.

For more information and how to apply please scan the QR code.



FREE sessions to help families achieve a healthier diet and a more active lifestyle.

New courses will be starting in September 2024.

To register or make a referral please use our online link at lambeth.gov.uk/ready-steady-go

Contact the team on **020 7926 0619** or email readysteadygo@lambeth.gov.uk



Family feedback

“ All staff are really friendly and knowledgeable, we will miss the sessions ”





NO NEED TO STRESS,
YOUR **BLACK BIN**
NEEDS LESS!



Recycle in
Green Bin



Recycle in Brown
Food Waste Caddy



Recycle in
Green Bin



Learn more, play our game, scan the QR
code or visit: recycling-rumble.co.uk





Apply online and apply on time

Was your child born between 01/09/13 and 31/08/14?

If yes, your child should be starting secondary school in September 2025. If you are a Lambeth resident, you should apply for a school place using the safe, free and easy to use portal via our website, **lambeth.gov.uk/admissions**

It's available 24 hours a day, 7 days a week, up until the admissions closing date, which is midnight **31 October 2024**. **If you apply after this date the likelihood of gaining a place at your preferred school may be significantly reduced.**

For more information see the [Lambeth secondary transfer 2025/26](https://lambeth.gov.uk/admissions) webpage via lambeth.gov.uk/admissions

