



# Lambeth All Age Autism Strategy 2024 - 2027

**Bridging Gaps, Enhancing Lives**



Easy  
Read



# Contents

Introduction .....	3
Lambeth 7 Key Goals .....	4
Understanding and Accepting Autism .....	6
Children and Young People .....	8
Helping Autistic People with Jobs .....	10
Health and Care for Autistic People .....	13
Supporting Autistic People in the Community .....	15
Helping Autistic People with Police and Justice .....	17
Understanding, Valuing, and Helping Parents and Carers .....	19
For more information .....	21

# Introduction



This is Lambeth's plan to support autistic children, young people, and adults over the next 3 years.



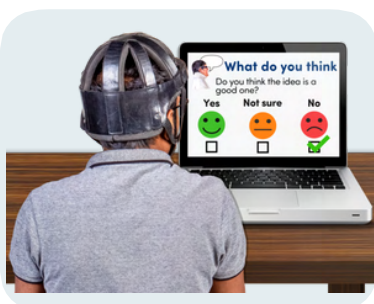
The UK plan says that local councils like Lambeth should listen to autistic people, work together with health, workplaces, schools and others to create a plan.



Between February and March 2023, Lambeth talked to a lot of people.



Lambeth talked to parents, families, people who work in different jobs, businesses, groups, and autistic people.

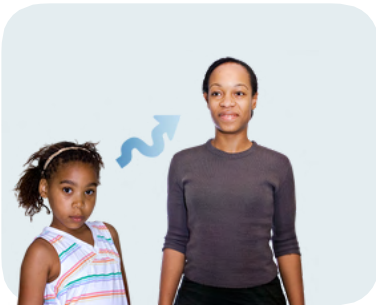


We got 131 answers from an online survey, had 4 online meetings with 58 people coming along, did 1 face-to-face event with 28 people.

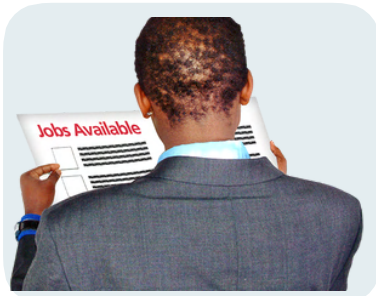
# Lambeth 7 Key Goals



We want everyone in society to learn about autism and be more accepting of people who are autistic.



We want to make sure children and young autistic people can go to school and have help to move smoothly into being adults.



We are working to help autistic people find and keep jobs.



We want to stop the unfairness in health and care that autistic people face.



We want to build better support outside of hospitals and help autistic people live in their communities happily.

# Lambeth 7 Key Goals



We aim to improve how autistic people are supported if they have to deal with the police and justice system.



We have a special goal to recognise the important work of parents and carers and work closely with them as partners in supporting autistic people.

## **Main Goal:**

Lambeth wants to make a place where autistic people are important and part of the community.

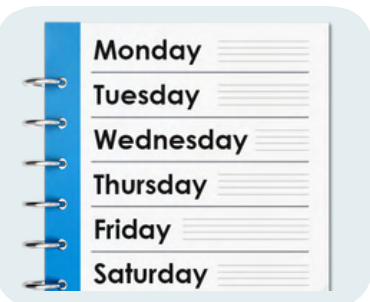


We want to make sure people can get to school and job programs that are right for them, find good places to live, and help everyone understand and respect autistic people more.

# Understanding and Accepting Autism



We want to help everyone learn more about autism and support autistic children in schools.



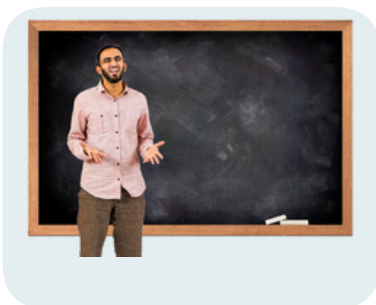
During Autism Awareness Week, we will share information with children, young people and parents to help schools meet students' needs.



We want to stop unfair treatment and show how unique each autistic person is.



We will continue to teach everyone about autism, support businesses to be more welcoming for autistic people, and celebrate their special talents.



We believe it's important for professionals, teachers, and everyone to learn more about autism, especially from autistic people themselves.



# Understanding and Accepting Autism



We will offer training with advice from autistic people to help calm difficult situations and communicate better with autistic people who are struggling.



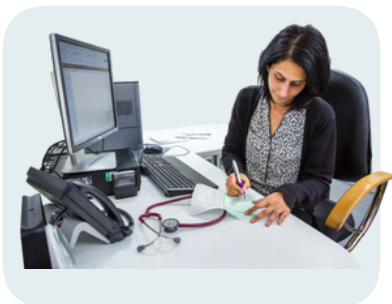
We want to keep hearing your ideas, improve things, and fix misunderstandings.



We will check reviews and share what we find. We will listen to autistic people's feedback on our programs and change our plans to make things better.



You told us doctors and health workers need to learn more about autism and ADHD.

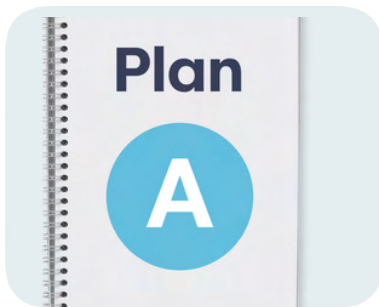


Lambeth's health team will train doctors and their teams about autism and ADHD, focusing on important information they need.

# Children and Young People



You believe starting early support for autistic children is key to preparing them for adulthood.



We will make sure the Early Years Coordinator and the team help include everyone and give extra help to autistic children when they start school.



You are concerned about finding the help you need and if people know what you need.



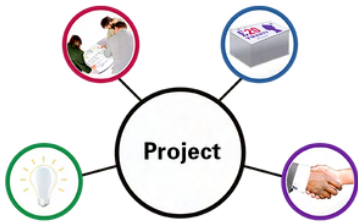
We will continue to develop our SEND Local Offer to make it easy for families to find the services and support they need.



You say all schools should welcome every student and help autistic people succeed.



# Children and Young People



We will continue projects to help schools and colleges to be better for everyone, focusing on autistic students.



You believe regular school teachers need more knowledge about autism, especially to recognise girls whose autism might not be obvious.



We will provide schools with free training to improve their understanding of autism and make changes to help autistic students feel more supported.



You want the transition from school to jobs to be easy, and for autistic people to succeed in their work.



We will launch a special program to prepare young people for employment, offering training and support to track their progress.

# Helping Autistic People with Jobs



You ask for improved training in health, care, and education about autism, led by autistic people or experts.



We will increase awareness with events and work with groups to improve job training for autistic people.



You told us workplaces need to understand how great it is to have autistic employees and make places better for them.



We will help employers get ready to hire, support, and keep autistic workers, focusing on kindness and understanding their unique skills.



You're worried about autistic people finding it hard to get jobs and think businesses should be more autism-friendly.

# Helping Autistic People with Jobs



We will create more internship and job opportunities in Lambeth for autistic young people and help them find work that suits them.



You think it's important for autistic people to get the right mental health support early.



Teams that focus on education and jobs will work together with employers and schools to help young autistic people find good career paths.



You are concerned there's not enough money for autism employment services and want a clear plan for funding.



We will keep using certain policies to create job opportunities for autistic Lambeth residents, making sure there's support for them.

# Helping Autistic People with Jobs



You said it's important to make places comfortable for autistic people because of their sensory needs.



We will work with schools and colleges and other groups to make sure autistic young people get the right support for their careers, keeping in mind their unique needs.



You believe all workplaces should understand and support autism, with special training for managing employees who think differently.



We will bring together schools, employers, and others to make sure autistic young people have jobs that respect their differences and support them well.



# Health and Care for Autistic People



You are concerned about getting proper support from doctors after an autism diagnosis and wanting services to work better together.



We are partnering with health to introduce a new system that lets doctors know about the needs of autistic people. This will improve the support you receive.



You are worried about long waits for autism and ADHD assessments and want quicker help after diagnosis.



We aim to speed up the assessment process, ensure support following diagnosis, and follow expert guidance on the best ways to assist you.



You believe we need mental health places that know more about autism, as being autistic can make mental health challenges tougher.



# Health and Care for Autistic People



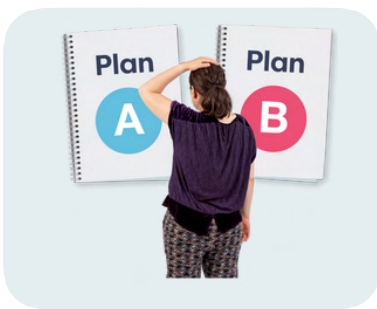
We plan to improve mental health support for autistic people by working with places like South London and Maudsley Hospital, focusing on a plan that helps both autistic children and adults.



You want everyone, especially police and doctors, to better understand and respect autistic people.



We are teaming up with health and care groups to offer training that increases awareness about autism. This training, named after Oliver McGowan, aims to ensure everyone receives appropriate support.



Finding help for autism is hard, and you want care to be fair for all. We're making a plan with GSTT and SLaM that listens to autistic people.



We will use a system to help doctors support you better and make sure everyone gets equal care.

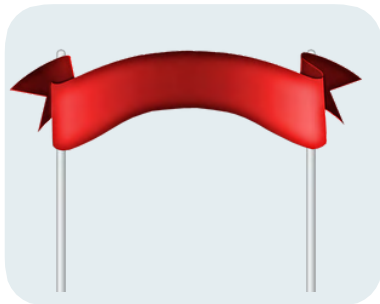
# Supporting Autistic People in the Community



You want hospitals to understand autism well, so they can really help autistic people.



We will improve care by sharing more information with patients, using the Oliver McGowan Training for staff, and checking what patients need right away.



We will also use a special flag to show how to adjust care for each person and work with others to keep getting better.



It is key to have care that matches each person and to watch how well it works.



We will check on treatments by talking to both patients and doctors. This helps us make sure the care fits and track how things are going.

# Supporting Autistic People in the Community



People with learning disabilities and autism need better homes and help to live on their own.



We will team up with others to provide better housing and check on costly places to help people live more independently.



Autistic Adults need steady, strong support to live by themselves and join in the community.



We are setting up a service to offer help whenever it's needed, helping them live independently and be active in the community.



Families also need help to support their loved ones as best as they can.

We will support the whole family, not just the autistic people, by working with all services and community groups to look after everyone's well-being.

# Helping Autistic People with Police and Justice



Autistic people can find it hard and feel at risk when dealing with the law.



We will give extra support to young people in prisons like Brixton and Woolworth and make sure autistic adults get the help they need in court by teaming up with experts.



Police, social workers, and others should get ongoing, proper training about autism from autistic people themselves.



We will improve training by using what we learn from talks with the Crown Prosecution Service and lawyers.



The law needs to really understand autistic people, especially women and girls.



# Helping Autistic People with Police and Justice



We will help more people use the Autism Card, which makes it easier for autistic people to talk to the police.



People are concerned about the treatment and understanding of autistic people in prisons and youth facilities.



We will continue to review and improve the way we support autistic people in these settings, paying close attention to their feedback and their families' insights.



It is very important to prevent autistic people from having problems with the law early on.



We will use our experience from children's mental health services to quickly identify and support autistic people in their communities.



# Understanding, Valuing and Helping Parents and Carers



Autism Champions sometimes feel overlooked and want to be recognised, plus they need training on how to support others.



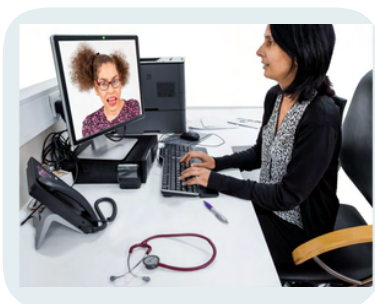
We will start training programs and make a way for Autism Champions to be celebrated and appreciated for their hard work.



It is really important to have places that offer breaks, mental health help, and special advice for parents and carers.



We will set aside money to create these resource places and give mental health support that fits the needs of parents and carers.



People are wondering how doctors in local clinics (GPs) can help autistic people and their families better.

# Understanding, Valuing and Helping Parents and Carers



We will hold meetings with these doctors to explain their role clearly and give them what they need to support families.



There is a need for special parenting classes and groups just for families with autistic children.



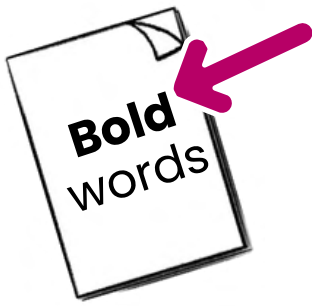
We will keep improving our help for parents by giving them special support that is proven to work for families with autistic children..



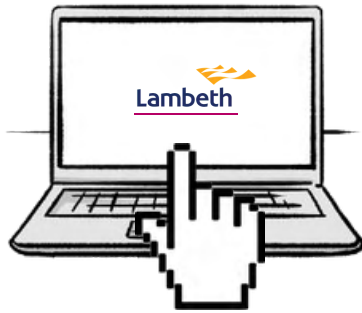
Some people think parents of children with special needs are not helpful, but actually, they are very important helpers.



We will see parents and carers as experts because of their experience and work together with them in helpful ways to support them in their important role.



In this Easy Read document, difficult words are in **bold**. We explain what these words mean in the sentence after they have been used.

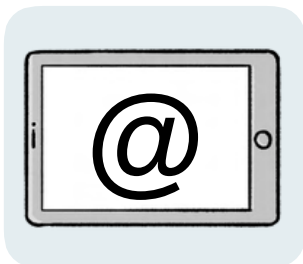


Some words are **pink** and **links underlined**. These are links which will go to another website which has more information.

## For more information



You can look at our website here:  
[lambeth.gov.uk/all-age-autism-strategy](https://lambeth.gov.uk/all-age-autism-strategy)



If you would like to contribute, email:  
[allageautism@lambeth.gov.uk](mailto:allageautism@lambeth.gov.uk)