

Lambethtalk

YOUR FREE LAMBETH COUNCIL MAGAZINE

CHILDREN & YOUNG PEOPLE 2024



HOLIDAY ACTIVITIES AND FOOD / p10

Free places in 70 locations

MARVELLOUS MAKERS

/ p12

Come to your local library!

COST OF LIVING / p14

Here for you

COMMUNITY CONNECTIONS / p16

New funding available

AUTISM-FRIENDLY / p20

Our 7 priorities

CODING COURSES / p23

Become an expert in technology!



Lambeth



Everyone's talking about Lambeth's FREE cycle training services!

Cycle training for individuals or families

From beginner to urban commute, at a time and place to suit you

Children's holiday courses

From learn-to-ride to on-road sessions

Roadside Dr Bikes

Get your bike a safety check: Tuesdays and Saturdays around the borough

Cycle maintenance courses

Basic and advanced levels

No bike? We can loan you one when you train at Clapham Common

To register for a course or find out more, visit:
www.cycleconfident.com/lambeth

e: contact@cycleconfident.com
t: 0203 031 6730



CYCLE
CONFIDENT

Lambeth

LAMBETH'S
BIG SHIFT



FREE sessions to help families achieve a healthier diet and a more active lifestyle.

New courses will be starting in September 2024.

To register or make a referral please use our online link at lambeth.gov.uk/ready-steady-go

Contact the team on **020 7926 0619** or email readysteadygo@lambeth.gov.uk



102805 (5.24)

Family feedback

“ All staff are really friendly and knowledgeable, we will miss the sessions ”

Lambeth



Welcome

Dear residents,

As summer begins here in Lambeth, we are gearing up to once again deliver our Holiday Activities and Food programme. We know that the summer break can be challenging for some families in Lambeth, so we have come together with partners across the borough to provide over 30,000 places at over 70 holiday clubs specifically for those families in receipt of benefit-related free school meals.

Children across Lambeth will be able to enjoy sports, arts, music and trips, as well as continuing to get healthy and nutritious meals throughout the summer break.

Take a look at what's on offer inside this edition of Lambeth Talk and try out something new this summer!

Cllr Claire Holland, Leader of Lambeth Council

in this issue...



HOLIDAY ACTIVITIES AND FOOD p10-11

For translation of articles in any other language, large print format, or to opt-out from receiving the magazine contact: lambethtalk@lambeth.gov.uk

Edited and designed by the Lambeth Communications team. Contact us: communications@lambeth.gov.uk



NEWS p4-5



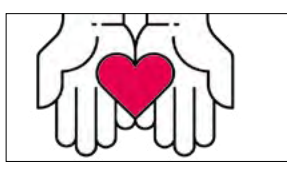
POET LAUREATE p7



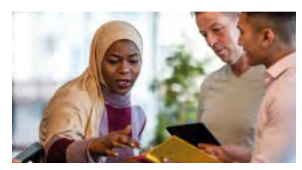
MEET THE MAYOR p8-9



LIBRARIES p12-13



COST OF LIVING p14



FUNDING p16-17



ACTIVE LAMBETH p18



AUTISM-FRIENDLY p20



CODING p23

NEWS

Kennington Oval Reimagined creates new space for children to play

The Kennington Oval Healthy Neighbourhood trial will introduce vehicle restrictions to Kennington Oval, Clayton Street and Bowling Green Street aimed at reducing through traffic and deliver wider improvements that will encourage more people to walk, cycle, scoot, or wheel. It comes after extensive collaboration between the council, residents, businesses, and the wider community.

The trial scheme – known as Kennington Oval Reimagined – will build on the success of two existing School Streets where traffic is already restricted at pick-up and drop-off times. Street improvements such as new seating, more sustainability measures and new play space for children will be created.

The Kennington Oval Healthy Neighbourhood scheme includes Henry Fawcett Primary School and St Mark’s Primary School, which will benefit from new green spaces for children and young people to enjoy and explore free of traffic.

Lambeth Council has unveiled new designs for the Kennington Oval Healthy Neighbourhood that will transform streets into places where people can meet and socialise and create new spaces for children to play.



“ We want children to feel confident exploring their local area, which is why we are reducing the amount of traffic coming through the area as well as creating new, safe spaces for our young people we can benefit their health and wellbeing.”

Cllr Rezina Chowdhury, Deputy Leader, Cabinet Member for Sustainable Lambeth and Clean Air

Hill Mead Primary students plant trees in Brockwell Park

Lambeth school children get hands-on experience planting trees in Brockwell Park after pitching their improvement ideas to councillors.

Pupils from Hill Mead Primary School helped plant 70 Elder, Wild Cherry, Dogwood, Hazel and Buckthorn trees in Brockwell Park as part of the “Rewild Brockwell North” and “Park Life” projects.

The children have been involved in the Park Life research programme run by Goldsmith’s University to

suggest improvements to Brockwell Park. One of the children’s key suggestions was to create more biodiversity and habitats for wildlife, so they were excited to be invited to a tree planting day to help introduce more habitats for nature as part of the Rewild Brockwell North project. The children planted 60 small trees (whips) and helped plant nine larger trees (standards).

Deputy leader Cllr Rezina Chowdhury, Cabinet Member for Sustainable Lambeth and Clean Air, said: “I’m delighted that we’re able to work with children like this and deliver educational opportunities and influence for young people as we reshape the borough to confront the climate emergency.”



£7m investment in SEND pupils

Lambeth Council has announced a £7million investment in support for children with Special Educational Needs and Disabilities (SEND) in response to a rise in children diagnosed with Autism and Attention Deficit Hyperactivity Disorder (ADHD). The funding will see five new Resource Bases established to provide specialist support to ensure every SEND child is able to be educated in the borough. Around £1million will be invested in Turney School, West Dulwich, and £1million in Livity School, Brixton.

The council will open the first Autism Girls Only Resource Base at La Retraite Roman Catholic Girl’s School, and new bases will open in Richard Atkins Primary School and Van Gogh Primary School to cater to children with Social, Emotional Mental Health (SEMH). Lilian Baylis Technology School will also benefit from a specialist Autism base.

Cllr Ben Kind, Cabinet Member for Children and Young People, said: “We have seen a rise in diagnoses for Autism and ADHD and therefore have focused on supporting this need with our new resource bases. This ambitious investment has the potential to change young peoples’ lives and I look forward to witnessing their impact.”

Lambeth Council has joined forces with the STREET TAG app to give children, parents, and teachers a chance to get active and win prizes. The free app awards points for completing your journey by walking, cycling, scooting, or wheeling, past virtual tags in parks and locations close to schools to encourage them to take more active forms of travel. Schools can enter a team of up to 250 people and the five top scoring schools can claim £500. Season two ends on July 12 but there is still time to sign up and take part. For more information visit <https://streettag.co.uk/>

NEWS

SEND SURVEY

Let's get the voices of parents, carers and families of children with SEND heard, and built into plans to improve education, health and social care.

If you're a parent or carer of a child or young person (up to 25) with Special Educational Needs & Disabilities (SEND), the annual Lambeth/NHS survey is your chance to put your experience at the heart of decision-making in Lambeth's SEND and Alternative Provision Strategy for 2024 – 2030.

Please submit your completed survey before **midnight on 21 July**. Say what you feel – no need to give your name or details. We can help you do the survey by phone or in your first language. Please tell other SEND parents/carers to do the same.



Lambeth Schools

Our Primary schools are facing falling numbers of children starting every year. We are extending the deadline for you to comment on the informal consultation into primary school places.

To have your say, please scan the QR code.



Lambeth Allies programme creates LGBTQ+ safe spaces

The Lambeth Allies programme is a partnership between Lambeth Council and LGBT HERO to create safer social spaces for the LGBTQ+ community.

Lambeth Council and health campaigning charity LGBT HERO have launched the Lambeth Allies

programme across the borough after a successful pilot in Vauxhall and Clapham.

The programme offers LGBTQ+ awareness training and practical advice for local organisations to become more inclusive, for example providing space for LGBTQ+ support information such as health leaflets and reporting hate crimes to the authorities or charities like Galop.



CULTURE

Abstract Benna, Lambeth's first Poet Laureate, has written and performed a poem to inspire the borough's creative people as a farewell to his time in office.

Lambeth's first Poet Laureate looks back – and forward

“ I was inaugurated as Poet Laureate for Lambeth on October 27 2022. It has been incredible to have a local platform with a national reach that gave local writers a stepping stone. Imagine having the support and resources of the whole borough behind you and all you have to do as an artist is show up to archive the story of the area and create.

“It's been an insightful experience. I've written new poems and performed across the borough and for cultural networks, facilitated workshops in schools to share my experience on the power of art, and helped to champion Lambeth's home-grown talent.

The main thing I've learned is that art really does have the power to move culture and a big part of the role was sharing that insight, which is what inspired this poem and film. ”



“[...] its a super power to grab a nation with imagination /
agitating the zeitgeist /
or see the world about to burn and make the food for
thought bitesize /
near Mai Tais in night life or provide the right guide
/ through dry cries like / Still I Rise [...]

AI Couldn't Write This – Abstract Benna 2024

Cllr Donatus Anyanwu, Lambeth Cabinet Member for Stronger Communities, said: “Benna was born and educated in Lambeth, and now resides here with a deep relationship with the many parts of the borough that raised him.

“As an established Spoken Word Artist, he was a natural fit to take up the inaugural Poet Laureate position.

“Benna leaves a legacy of poems written with, for, and about the people and places of Lambeth. His words will continue to be enjoyed by current residents and inspire future generations.”

See more www.abstractbenna.com

OUR NEW MAYOR

Meet the Mayor



“

I currently have the title of youngest Mayor in Lambeth history, but if during my term I haven't inspired someone to come and break that record, then I won't have been a success.”

Councillor John-Paul Ennis

Where do you live? For how long have you been in Lambeth?

I live in Brixton, I have lived in Lambeth my whole life, I was born in Kings College Hospital and went to school in Lambeth too.

How did you become involved with your community?

I would say, I first got involved in my community by playing outside with friends as a kid in my estate, playing football and going to youth clubs in my local area.

My dad also used to run Pubs when I was growing up, so I also spent a lot of time in them talking to the grown-ups and meeting people from all different walks of life.

When I was around 17, I started getting involved in community organising and learning about different social justice issues which led me to lead on campaigns around affordable housing, youth safety and climate justice.

When did you decide to get involved in politics?

I went through a bit of a difficult period in my personal life just as I turned 17 and it made me realise that I wanted to have a positive impact on my community and to leave a legacy on the world. I then joined a political party but still focused more on my community organising activities rather than the organised politics.

That all changed in 2021 when I realised, I wanted to see what it

was like to 'sit on the other side of the table' and have a better understanding of how it all worked from a councillor perspective.

What would you like to change in Lambeth if you could?

I would like to change how young people are perceived in the borough. Even when we talk about one of the biggest issues our young people face (knife crime), the framing is often about 'youth violence' rather than 'youth safety' which is where the focus should be.

I would also love to be able to engage and empower young people across the borough to be able to have more of a voice and a say in what goes on around them.

Cllr John-Paul Ennis is the Mayor of the London Borough of Lambeth for 2024/25, the youngest mayor in the borough's history.



Left:
Ritz's welcoming message
for John-Paul

Which charities do you support?

There are a lot of charities and organisations doing great work in the borough and unfortunately I could only pick two, so my chosen charities are:

- **Young People Matter (YPM)**, they're an organisation based in Stockwell and do lots of after school and half term activities with children across the borough, as well as offering other youth services and community outreach. I used to play football with them when I was in year 9, so I felt it was a good opportunity to give back to a charity that I benefitted from as a young person in Lambeth.

- **Brixton Street Gym** is my other charity, it's not just a gym, but a community hub fostering positive relationships across the community and is a space for people to learn and develop, as well as promoting physical activity, health and wellbeing. I have also been here over the years and have seen the amazing work and community building that they do first hand, so it felt important to be able to support them in what they do.

What is your favourite spot (park, street, landmark) in Lambeth and why?

This is such a hard question, I love so many things in Lambeth. If I have to pick one place, I'd say Myatt's Fields Park, I've spent

a lot of time there in the football pitch, it's really scenic and my first memory of riding a bike.

How would you like to spend a free evening?

I mainly spend it playing FIFA online with my friends, I love playing Pro Clubs. I also like watching real football too, so will be enjoying watching the Euro's over the summer.

What is your motto in life?

The words I've lived by for a long time are 'everything happens for a reason'. It's helped me put a positive spin on a lot of negative situations that have come my way and helped lead me on the path I'm on today.

SUMMER ACTIVITIES



Lambeth's Summer Holiday Activities and Food 2024 runs from Monday 29 July until Friday 30 August and it's shaping up to be a summer to remember!

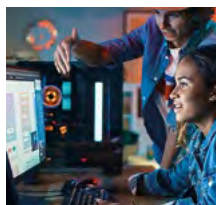
Lambeth are funding over 70 holiday clubs running across the borough and approximately 30,000 free spaces will be available for children and young people who receive benefit-related Free School Meals.

There's an array of exciting activities on offer including multi-sports, Olympics-themed activities, dance and drama workshops, leadership and skills development opportunities, DJing, digital workshops, arts and creative activities, trips and whole load more!



All eligible children attending these clubs will receive a healthy, tasty meal and there will be lots of fresh fruit on offer for snacks.

During the school holidays over Easter, Lambeth's Holiday Activities and Food funded 61 holiday clubs located across the borough and provided free places for more than 10,000 eligible young people. Over 10,000 meals were served and a wide range of activities were on offer including dance, multi sports, arts and others!



“All of us at Lambeth Council are excited to deliver our Holiday Activities and Food programme for the fourth year, funded by Department for Education. Across this year's spring, summer, and winter school holidays, £1.3 million is being invested in providing free healthy food and enriching activities for children and young people aged 4-16. The programme is targeted at those receiving benefit-related Free School Meals (FSM), with places available for children living in households with a lower income. We encourage everyone to get involved, try out new experiences, learn new things and celebrate summer”

Councillor Dr. Mahamed Hashi
Cabinet Member for Safer Communities

“We want Lambeth to be the best place for children and young people to grow up. Given the cost of living crisis, the council is determined to offer a programme that helps support families and looks after all aspects of children's wellbeing.

Through our Holiday Activities and Food the council will be funding in the region of 30,000 free places in over 70 locations across Lambeth. It will offer a wide range of diverse activities for children to get involved in while also providing healthy meals and snacks for all our children.”

Councillor Ben Kind, Cabinet Member for Children and Young People

Brixton

198 Contemporary Arts and Learning, 198 Railton Road

ALLStars Activity CIC
St Helen's Primary School

Angell Delight, Unit b Fairfax House Overton Road

BIGKID Foundation Dexters Adventure Playground

Brixton Community Based - Brixton Youth Theatre
St Vincents Brixton Talma Road

Brixton Wings, Unit 4 Fairfax House Overton Road

CHIPS (Christian International Peace Service), Unit 7, Warwick House. Overton Road

Code 7 Ltd, Moorlands Community Centre, 50A Corry DriveP

Community Education Foundation & Lyncx (CEF Lyncx), Blenheim Gardens, Brixton Hill

Dwayne Simpson Foundation CIC, Loughborough Park APG

Exceed Reading Stars Ltd
Van Gogh Primary School

Fulham Football Club Foundation
Ferndale Leisure Centre

High Trees Community Development Trust, Tulse Hill Adventure Playground

Lambeth Somali Community Association, 13-15 Stockwell Road

Lambeth Tigers Foundation
Myatts Field Park

Lilford Area Residents Association, Flat 46, Lilford Road

Longfield Hall Trust, 50 Knatchbull Road

Loughborough Community Centre, Max Roach One O'clock Club

Loughborough Junction Group for Grove Adventure

Playground, Grove Adventure Playground

ML Community Enterprise Limited, Marcus Lipton Centre

Pinnacle Group, Myatts Field North Community Centre

South London Topcats aka Brixton Topcats, Brixton Recreation Centre

St. Matthew's Project, Brockwell Park

STEP NOW, International House, Canterbury Crescent

STREAMZ, 143-145 Brixton Road

The Soul Shack LDN CIC, 171 Ferndale Road

Tulse Hill Estate Tenants and Residents Association, Jubilee Hall, Tulse Hill Estate

UK Latin Community CIC
St Matthew's Hall

Whippersnappers, Brockwell Lido

Young People Matter
Larkhall Primary School

Clapham

Activities 4 U, 33 Clarence Avenue

Art4Space, 31 Jeffreys Road

Autism Voice Limited, 161-167 Clapham Manor Street

Big Up Communities, The Stewarts Road Adventure Playground

East African Association
Larkhall Park Courland Grove

Eritrean Muslim Community Association UK, 283-291 Wandsworth Road

Kinetika Bloco, Clapham Park Centre. Kingswood Rd

Metropolitan Thames Valley Housing, The Cube Community Centre, 116 Kings Avenue

Omnibus Theatre, 1 Clapham Common Northside

Stewarts Road, Stewart's Road Adventure Playground

The Hebe Foundation
823-825 Wandsworth Rd

UK Latin Community CIC, Oaklands Estate, Hawksworth Hall Community Centre

North Lambeth

Bankside Open Spaces Trust
Living Space. 1 Coral Street

Black Prince Trust, The Black Prince Community Hub

Bright Centres, Bright Centres 18 Oakden Street

Coin Street Centre Trust
108 Stamford Street

Cottington Close Sports Kids Camp, 1 Opal Street

JJROB LDN CIC, Lilian Baylis School

Kennington Park Community Centre Community Benefit Society, 8 Harleyford Street

Lollard St Adventure Playground, 102 Lollard St

Oasis Hub Waterloo, Living Space 1 Coral Street

Oasisplay, Oasisplay Stockwell Adventure Playground

Oasisplay, Oasisplay Bolton Crescent Adventure Playground

Oasisplay, Oasisplay Nature Garden

Slade Gardens Community Play Association CIO, Slade Gardens Adventure Playground

The Boursy Academy CIC
Wyvil Primary School

Triangle Adventure Playground Association, Ashmole Street

UINCAP, Kennington Park Centre. 40 St Agnes Place

UK Latin Community CIC, Wheatsheaf Community Hall

Vauxhall City Farm, 165 Tyers Street

Norwood

AA2ndvoice CIC, Community Hall, Chatsworth Baptist Church

Ashdon Jazz Academy, The Old Library

BiG (Besty's Inspirational Guidance) C.I.C., Rosendale Playing Fields

Parallel Youth Enterprise
St Martin-in-the-Fields School

Rathbone Society, The Old Library, 14-16 Knights Hill

Rathbone Society, Central Hill Community Youth Hub

Upper Norwood Library Trust
39 Westow Hill

Streatham

Allstars Activity CIC, Crown Lane Primary School

OurParks LTD, Julian's Primary School. 226, Leigham Court Road

Streatham Youth and Community Trust, Conyers Road

Streatham Youth and Community Trust, The Hut Streatham Vale Park

UINCAP, 136 Streatham High Road



LIBRARIES

What's on this Summer



The theme for this summer's activities in Libraries is **Marvellous Makers**. It's all about creativity! From dance to drawing, junk modelling to music, there's something for everyone.

- Each week there will be fun activities in every Library – and it is totally free to take part
- Join the Marvellous Makers **Summer Reading Challenge** run by the **Reading Agency** – the challenge is to read **six books in six weeks** and pick up stickers and rewards as you do it. When you succeed you will get a **certificate** and a **medal**. Can you beat the challenge and read even more? Why not tell us your target for the summer and see if you can beat it? The challenge starts on the **6 July** and every library will have a **party** to celebrate at the end of the summer.
- **Borrow a football** to take to the park at the following libraries, Minet, Carnegie, Brixton, West Norwood, Clapham, Durning
- **Borrow a ukelele** from South Lambeth Library and learn how to play

- Join a Chatterbooks **book club**
- Check out the online offer – **audio books, comic books, films** – again all **free**

If you don't have a library card, or have lost it, or are worried you have got overdue books, just speak to the librarians and they will sort it out so you are ready to get started.

There really is something for everyone. There are over a twelve **Wriggle and Rhyme** sessions running for **children under 5** every week.

If you are unable to get to your library because of ill health – we have a **Home Visit Service** who can visit you so you can take part in the Summer Reading Challenge.

For older teenagers there are volunteering opportunities in each library, which will look good on applications when you leave school.

Just ask at your local library or visit the library website **libraries.lambeth.gov.uk** to find more information.

If you are looking for free and fun things this summer, why not come to your local library? You will be amazed at all the things on offer that are totally free.

Parents and carers

If you want to give your child the best start with their education getting them a **library card** is a **free** and excellent way to help them. **One in four** children cannot read well by the age of 11 and this hugely limits their life choices. The Summer Reading Challenge makes reading fun for children and helps them build their skills during the summer holidays.

A national poll of primary school teachers found that

- 90% agreed that visiting a public library regularly can help young children prepare for starting school and 97% would advise a parent with a child starting school in September to enrol them with their local library
- 94% would advise a parent with a child starting school in September to take part in the Summer Reading Challenge.

Illustrations: Natalie Quek ©Reading Agency





There are ten libraries across Lambeth so there is always one near where you live in Lambeth. Visit libraries.lambeth.gov.uk



Brixton Library

Windrush square, Brixton Oval,
SW2 1JQ
Phone: 020 7926 1058
Email: BrixtonLendingLibrary@lambeth.gov.uk

Carnegie Library

192 Herne Hill Road, SE24 0DG
Phone: 020 7926 6050
Email: CarnegieLibrary@lambeth.gov.uk

Clapham Library

Mary Seacole Centre, 91 Clapham
High Street, SW4 7DB
Phone: 020 7926 0717
Email: ClaphamLibrary@lambeth.gov.uk

Durning Library

167 Kennington Lane, SE11 4HF
Phone: 020 7926 8682

Email: DurningLibrary@lambeth.gov.uk

Minet Library

52 Knatchbull Road, SE5 9QY
Phone: 020 7926 6073
Email: MinetLibrary@lambeth.gov.uk

South Lambeth Library

180 South Lambeth Road
SW8 1QP
Phone: 020 7926 0710
Email: SouthLambethLibrary@lambeth.gov.uk

Streatham Library

63 Streatham High Road
SW16 1PN
Phone: 020 7926 6768
Email: StreathamLibrary@lambeth.gov.uk

Upper Norwood Library

39 Westow Hill, SE19 1TQ
Phone: 020 7926 1063
Email: Uppernorwoodlibrary@lambeth.gov.uk

Waterloo Library, The Oasis Centre

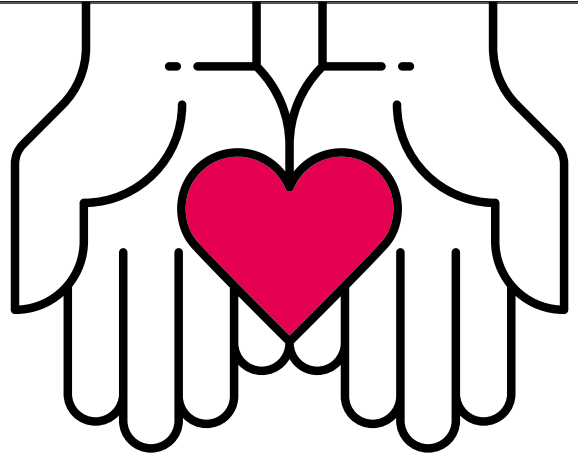
Oasis Centre, 1 Kennington Road
SE1 7QP
Phone: 020 7926 8751
Email: WaterlooLibrary@lambeth.gov.uk

West Norwood Library

1-5 Norwood High Street
SE27 9JX
Phone: 020 7926 8092
Email: WestNorwoodLibrary@lambeth.gov.uk

SUPPORT

Cost of Living



Many residents are continuing to struggle with increases in the cost of living. You may be eligible for support that you are not claiming. Below are things you can do to help reduce your costs and increase your income. You can find more on: www.lambeth.gov.uk/costofliving



Check to make sure you're not missing out on benefits

Up to 7 million people in the UK are eligible for benefits but not claiming them. Use a benefits calculator to see whether you are one of them: <https://www.gov.uk/benefits-calculators>

There are also local benefits that can help you with paying council tax and housing costs. You can find out whether you are eligible on our website: www.lambeth.gov.uk/extra-support



Improve the energy efficiency of your home and apply for discounts

You can register for an appointment with Groundwork, who work in partnership with the council. They can provide advice on decreasing your energy bills and improving the energy efficiency of your home: <https://london.greendoctors.org.uk/>



Get help with food costs

There are many places in Lambeth where you can access food in a crisis or a sit-down meal at a community centre. The Lambeth Larder website has a directory of the support available: <https://www.lambethlarder.org/>



Get help with health costs

The NHS provides support for those on a low income who require health treatments that are usually paid for, including prescriptions, dental and eye treatments as well as transport to appointments. More details can be found: bit.ly/low-income-scheme

The Pharmacy First scheme also supports residents in receipt of means tested benefits with free, over the counter treatments for minor ailments in 33 pharmacies in the borough. More details can be found: bit.ly/pharmacy-first



Move to a social tariff

Social tariffs are cheaper broadband and phone packages for people claiming some benefits. You can see information about the tariffs available to you on the

Ofgem website: bit.ly/cheaper-packages



Seek debt advice

If you're currently in debt, we'd recommend you speak with one of the boroughs advice agencies: www.lambeth.gov.uk/get-benefits-advice

You can also contact StepChange on **0800 138 1111**.

Financial pressures can cause many residents anxiety, stress or depression. If you are concerned about your mental health, please speak to your local GP or health service. You can also contact Mind's Information Line for details on support available near you by calling **0300 123 3393**.

The council also has a range of support available to residents struggling with the cost of living. You can find out about support you might be entitled to and other information on our website: www.lambeth.gov.uk/costofliving



New £5million support announced

Councillor Fred Cowell, Cabinet Member for Equalities, Governance and Change (job share), said: “We are determined to support those impacted most by this huge squeeze on household budgets, particularly our more vulnerable residents.

“It might seem like the cost of living crisis has eased, but prices for essentials are still much higher than they were in 2021. Despite these price rises the incomes of our most hard-pressed households have stayed largely the same. We are committed to helping as many local people as we can.”

The latest allocation for 2024 follows support worth £14million distributed over the last two years in response to the cost of living crisis. Last year Lambeth’s cost of living response plan provided help to more than 28,000 households and generated additional income of £5.4m in unclaimed benefits or grants.

Despite easing inflation Lambeth Council’s research has found that the most vulnerable are still at risk. Many household budgets are so stretched people can only afford to heat and eat, leaving them vulnerable and at risk of building up debt, or ill health.

The new money will be directed to households in the borough that were already facing disadvantage, such as low pay and debt.

Councillor Nanda Mandley-Browne, Cabinet Member for Equalities, Governance and Change (job share), said: “As part of our 2030 Borough Plan, we want to make sure Lambeth becomes a borough of Equity and Justice. Supporting residents through the immediate cost of living crisis and developing a programme to tackle the root causes of poverty in the borough are key to this ambition.”

To fund this year’s programme the council is using its last allocation of the Department for Work and Pensions’ Household Support Fund of £2.7m, with an additional £1.3m of Lambeth funds.

A further cost of living crisis support programme worth £5.3million has been developed by Lambeth Council to help the most hard-pressed households in the borough. It includes immediate support for those most impacted by continued high prices and begins to shift the focus to tackling the longer-term causes of poverty in the borough.

This year’s support will include:

- Holiday vouchers for those in receipt of income based free school meals
- Free period products in council buildings, including libraries and leisure centres
- Expert energy saving advice
- Extra support via the council’s Emergency Support Scheme
- Targeted support for the borough’s most vulnerable residents
- Additional support for voluntary and community organisations.



FUNDING OPPORTUNITY

The Community Connections Fund will soon open for applications from local people with big ideas to improve their neighbourhoods. Lambeth Council has made up to £1million total funding available in the next round, this includes the addition of new Development Grants up to £10,000. Project Grants of between £10,000 and £200,000 are also available. Applications are expected to open mid-July and close in September.

The Community Connections Fund



Cllr Danny Adilypour, Deputy Leader, Cabinet Member for Sustainable Growth and New Homes, explains how the Community Connections Fund can help communities do great things.

How does the Community Connections Fund help organisations?

We launched the first round of funding two years ago with £800,000 given out to more than a dozen community groups and charities in Lambeth to kickstart their projects. It is exciting because it hands the power to local people to make positive changes in their local

area. They will know the challenges their communities face and will be best placed to work towards solutions.

Where does the money come from?

Lambeth is lucky to be able to attract exciting new developments across our borough. But those developments also must live alongside existing communities. When a developer wants to build in Lambeth, they have to make a financial contribution called the Neighbourhood Community Infrastructure Levy (NCIL), which is like a “developer tax”. The NCIL has to be used to invest in the area, to



improve amenities, create new public spaces or generally enhance the public realm so everyone benefits.

Who can apply?

The Community Connections Fund is open to charities, businesses, community or residents’ groups as well as social enterprises and Community Interest Companies. Individuals with an idea for a project

Applications are expected to open mid-July and close in September.



can also apply. Since the first round we have tried to make the application process more inclusive and accessible. We want as many people as possible to **have the opportunity to** apply for funding to improve their local area.

What has been the impact of the Community Connections Fund in Lambeth so far?

The first round saw 13 groups receive funding between £10,000 and £200,000. There has already been some huge successes including Oasis Children's Venture to create safe, outdoor space for children of all abilities. The

community organisation Root n Branch is working with residents in Stockwell to learn more about the climate crisis and how to be more sustainable. We also funded The Old Vic Theatre Trust to improve access to the arts for under-represented groups and people from all backgrounds and develop new skills.

What's new this time and why should I apply?

This year we have added Development Grants of up to £10,000 for new, or less established organisations who can use the funding to expand, test new ideas

and develop skills. It's all part of making this more inclusive, so everyone with a good idea feels they can make an application. This year it really doesn't matter if you've never filled in a funding form, or find the process overwhelming. We have lots of opportunities for one-on-one support during the application process as well as help filling in the application. We want everyone to feel the benefit from new investment in Lambeth and I am excited we have another opportunity to make peoples' ideas become reality.



For more information and sign up to the mailing list visit <https://www.lambeth.gov.uk/community-connections-fund>

ACTIVE LAMBETH

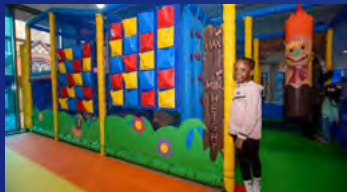
AL ACTIVE LAMBETH
Leisure for all

FIND THE BEST JUNIOR ACTIVITIES IN LAMBETH

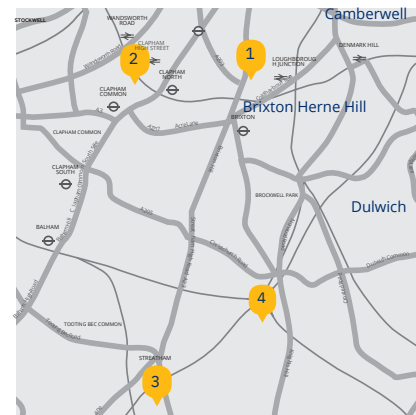
Discover junior activities at Active Lambeth! Unmatched for space, activities and value for money.

- Swimming Lessons
- Swim Crash Courses
- Gymnastics Courses
- Soft Play
- Climbing Walls
- Holiday Club
- Karaoke

 **Play from just £4** 



Our leisure centres are based in Brixton, Clapham, Streatham and West Norwood.



ACTIVE LAMBETH SWIM SCHOOL

Swimming lessons for all ages and abilities. From just £23 per month. **Concessionary rates available.**



Visit active.lambeth.gov.uk or scan the QR code to find out more

- 1 Brixton Recreation Centre**
27 Brixton Station Road, London, SW9 8QQ
- 2 Clapham Leisure Centre**
141 Clapham manor Street, London, SW4 6DB
- 3 Streatham Ice and Leisure Centre**
390 Streatham High Road, London, SW16 6HX
- 4 West Norwood Health and Leisure Centre**
25 Devane Way, London, SE27 0DF



Read Easy

The Housing Support team is collaborating with Read Easy a charity dedicated to helping adults who cannot read.

They aim to raise awareness of Read Easy's services among Lambeth residents to extend their support to more people in need.

Additionally, Read Easy is eager to find local volunteers in Lambeth who are interested in assisting adults with their reading skills.

By promoting their services and attracting volunteers, Read Easy hopes to enhance its impact and help more adults overcome literacy challenges.

Find out more: <https://readeasy.org.uk/>

Relationships, Sex and Health Education

Win a £50, £25, or £15 Amazon voucher

HELP US SUPPORT YOU BETTER!



If you are aged 16-25 and you live in and/or go to school in Lambeth, scan the QR code to fill out this short anonymous survey about your experiences with RSHE and how the new Sexual Health Outreach Services could support you better!



Bridging Gaps, Enhancing Lives

An Autism-Friendly borough

We want to make sure autistic people can access school and job programmes that are right for them, find good places to live, and help everyone understand and show respect.



Our 7 priorities – our aims

1. Understanding and Acceptance

We aim to provide specialised training and educate professionals and health and social care staff to promote understanding of autism within the community.

2. Education and Transition into Adulthood

We want to provide free training to develop schools' understanding of autism, adapt educational environments to better support autistic students and offer tailored educational programs and support for transitions into adulthood.

3. Employment

We aim to help employers, especially those with commitments to social value and Section 106, to better recruit, support, and keep employees with special educational

needs and disabilities (SEND), learning disabilities (LD), and autism.

4. Health and Care Inequalities

Over 60% of diagnosed cases live in more deprived areas. Therefore, it is essential to address socioeconomic barriers. We will support services to be accessible, inclusive, supportive and tailored to meet the needs of different ethnic groups and those in deprived areas.

5. Support in the Community and Inpatient Care

The ethnic distribution of autism highlights the need for culturally sensitive approaches. We aim to provide specialised support in the community and inpatient care, promote independence and offer drop-in support services for autistic adults.

6. Criminal and Youth Justice

We aim to put in place a thorough process to figure out the needs of autistic adults before and during court proceedings, and work with professionals and groups to make sure they get the right support during probation.

7. Helping Parents and Carers

We will train GPs and use the SEND Local Offer to connect families to necessary support services, including those that provide early help and parenting support.



Creative arts

Raw Material is a Lambeth Council-supported music and creative arts centre which specialises in programmes for developing creativity and promoting wellbeing in the South London community. They have purpose-built facilities including recording studios, a digital audio production suite, DJ and video equipment as well as a live room for performances, workshops and ensemble work.

Young Creatives Both young people and older adults can get involved in the programmes at Raw. Through their Young Creatives programme, Raw works with 16-25 year olds who are looking to develop themselves creatively and access creative opportunities. At Raw, they can receive the essential resources, skills training, professional guidance and industry experience to place them on the path to a creative life and artistic career.

Arts and Wellbeing Equally, Raw's Arts and Wellbeing programmes specifically cater for adult members of the community, and focus on

improving mental health through social and creative activities. Many individuals who face challenges to their mental health are referred to Raw Material by care organisations in the Lambeth area, but equally anyone who feels they would benefit from a safe, warm and creative environment is welcome to self-refer and join a programme right away.

Summer Programmes Typically, Raw Material's programming aligns with school term times, but that doesn't mean there aren't ways of getting involved over the summer as well. Raw will be running summer intensive programmes for young

people in the months of July and August. So, whether you are a young person who is looking to gain new skills, or a member of the community looking to forge new creative connections, drop by to discover what the charity can do for you, find your creative path, and bless the world with your Raw talent!

More Information Raw Material receive funding from Arts Council, Lambeth Council, Elevate, and are partners of Lambeth Sounds. They do receive donations from a number of charities too. Contact: Raw Material, St Vincent's Brixton, Talma Road, SW2 1AS.



A new SplashPad for summer fun

Lambeth handed over a new SplashPad water play facility at Agnes Riley Gardens.



Volunteers from the Friends of Agnes Riley Gardens received both a demonstration of the facility in action and a guide to the maintenance regime that they have promised to help with. The ease and costs of maintenance played a key part in deciding what kind of water feature to install.

This SplashPad replaces an existing paddling pool which had become very difficult to maintain, with chipped tiles and hygiene control issues.

Agnes Riley Gardens contains a children’s playground, two multiuse games areas and a community garden which is managed by the Friends of Agnes Riley Gardens. The rest of the site is landscaped with lawns, trees and herbaceous beds. It also contains a pond at its centre, which is probably a remnant of the original gardens of Oakfield House but is now laid out and managed for its wildlife interest.

The garden is open daily from 7.30 until 15 minutes before Sunset.

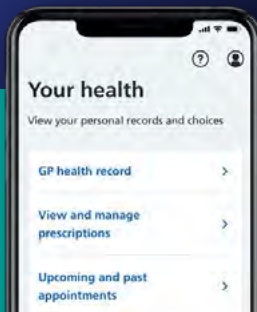


South East London

Did you know with the NHS App you can...

- ▶ Order repeat prescriptions any time of day
- ▶ Collect your prescriptions
- ▶ View your GP records and test results
- ▶ Quickly check symptoms
- ▶ View, cancel or book GP appointments*
- ▶ Contact your GP practice online*

*Availability may vary by GP practice.



Search **“NHS App help”** for support with the NHS App.

ARE YOU 16-24? A RESIDENT OF **LAMBETH?** NOT SURE WHAT TO DO NEXT? WANT TO EXPLORE PATHWAYS INTO **CREATIVE & DIGITAL CAREERS?**

WHY NOT SIGN UP FOR OUR NEXT US PROGRAMME TO GET ACCESS TO PAID OPPORTUNITIES, GUIDANCE FROM EXPERIENCED PROFESSIONALS AND AN INSIGHT INTO THE CREATIVE AND DIGITAL INDUSTRIES.

TO FIND OUT MORE ABOUT THE PROGRAMME AND REGISTER YOUR INTEREST, PLEASE GO HERE.



ELEVATE.
IT STARTS HERE

SUPPORTED BY
MAYOR OF LONDON



EMPOWERING LAMBETH



Free coding courses for children and adults are offered across Lambeth. Find the one closer to you and register. Lambeth's coding courses are not just teaching people to code, they are building a brighter, more creative technological future for the entire community.

Coding courses transform local estates

By Rev Gail Thompson from Millennium Community Solutions.

The courses encourage students to explore the world of technology through learning the basics of coding – from **Scratch** to **Python**, creating **Lego robots** and devices with **Microbit MakeCode**.

Empowering children and young people with the ability to create and not just consume technology is crucial in shaping a future that will increasingly depend on these skills.

Learning to code fosters **critical thinking, problem-solving abilities and creativity**. As technology continues to evolve and become integral to everyday life, early exposure to coding equips children and young people with the tools they

need to navigate future job markets.

Coding education also boosts confidence and instils a spirit of independence among students. By making coding accessible and fun, educators can inspire the next generation of innovators and leaders. The benefits of coding extend beyond individual learners because they contribute to a more technically proficient and confident society.

Adults in the community are also benefiting from our courses, opening up ways for them to gain new skills that enhance their employability and help them to support their children's own learning journeys. Aiming to empower the generations with key

digital skills, Millennium Community Solutions (MCS) has been setting up **free coding courses for all ages** on Lambeth Council's housing estates over the past two years. Our programme has been rolled out in partnership with the council's Resident Engagement Team, and it has already benefited more than 4,000 children and adults.

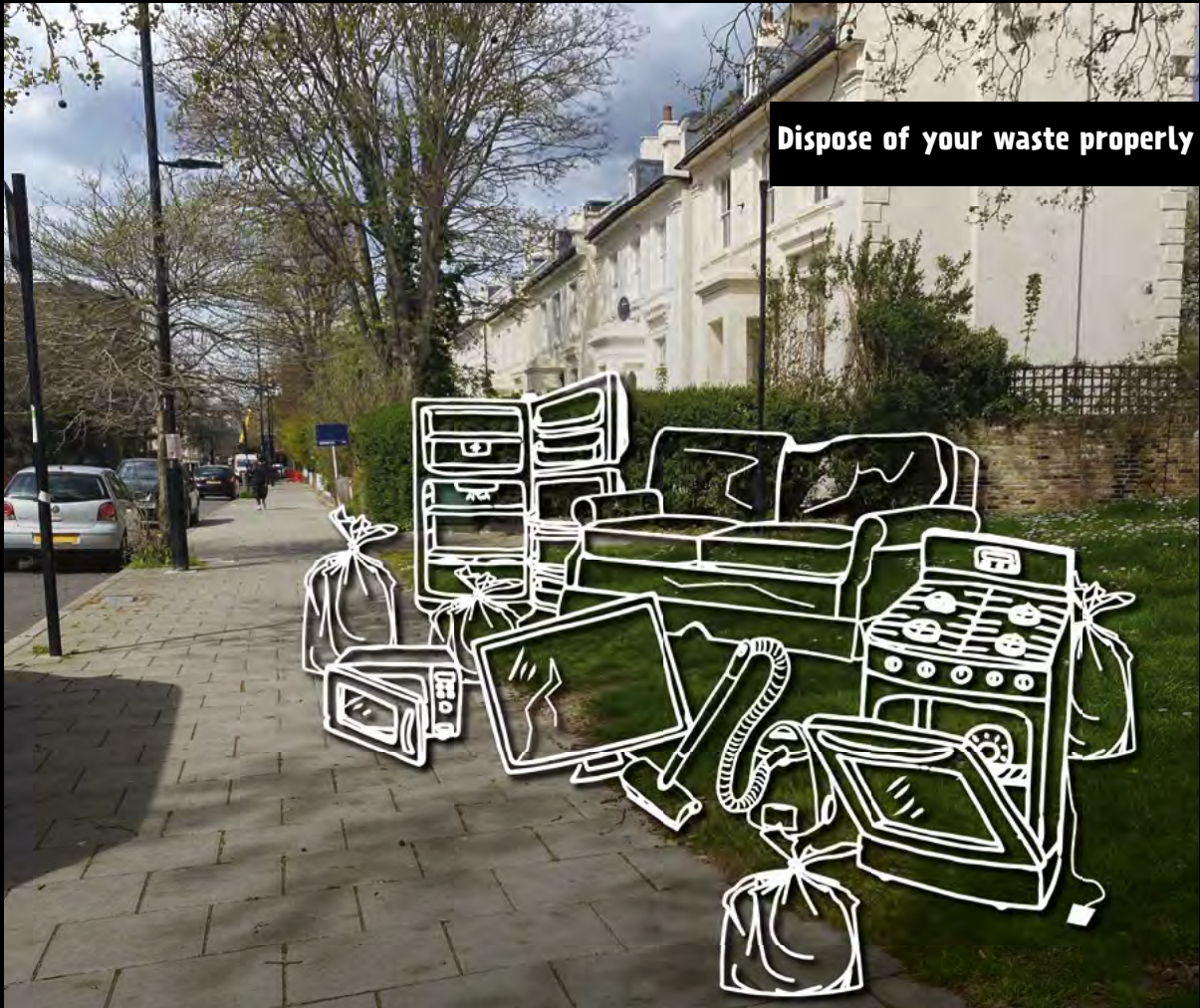
Millennium Community Solutions plans to expand the reach of our coding courses, including our women's classes on Fridays at Southwyck Hall in Brixton.



To register for a free course, visit www.southwyck.co.uk

FLY-TIPPING IS A CRIME!

YOUR WASTE, YOUR RESPONSIBILITY



Dispose of your waste properly

Please report illegal dumping on:
020 7926 9000



Scan here for
more information
on how to
dispose of your
bulky waste

