

Consultation on proposed Street Drinking Public Spaces Protection Order (PSPO) 2020 - 2023

**Consultation Report
September 2020**

Contents

1 Introduction

1.1 Background

1.2 Our proposals

2 The consultation

2.1 Consultation objectives

2.2 Who we consulted

2.3 When we consulted

2.4 How we consulted

2.4.1 Digital activity

3 Responses from members of the public

3.1 Summary of results

3.2 Summary of post code analysis and demographics

4 What happens next

1. Introduction

1.1 Background

1.2 A new Street Drinking Public Space Protection Order (PSPO) in Lambeth to replace the expiring Order. The existing Order expires on 19 October 2020 and the Council plans for this new PSPO to be in place as the old one expires. Please see [recommendation to consult report](#) for full context.

1.3 Our proposals

1.4 To introduce a new PSPO in Lambeth to tackle alcohol consumption in public places, the wording of the order which forms part of the consultation can be read [here](#).

2. The consultation

2.1 Consultation objectives

2.2 The introduction of a new Street Drinking Public Space Protection Order in Lambeth.

The order targets alcohol consumption in public places associated with anti-social behaviour. It requires those in breach of the order to surrender their alcohol to Council or Police officers or face a fine. If fines are not paid, offenders will be prosecuted.

Data analysed by the Council has confirmed that street drinking within Lambeth continues to have a detrimental effect on the quality of life of those in the locality. This detriment concerns the following ways:

- a) Serious crime linked to street drinking;
- b) Public nuisance in the form of intimidation and inappropriate behaviour towards members of the public, sometimes linked to congregation in groups;
- c) Impact on high street businesses in the form of loitering and aggressive begging outside of business premises and on the high street;
- d) Waste in the form of littering in public spaces including; housing estates, residential roads, parks and open spaces, and town centres; and
- e) The magnification of vulnerabilities associated with some individuals who are frequent street drinkers, the risk they pose to themselves and other members of the public.

If the PSPO is not introduced, it would mean that authorised officers, namely Council and Police officers, would not be able to efficiently and effectively resolve Anti-Social Behaviour (ASB) issues associated with the consumption of alcohol in public places.

2.2 Who we consulted

It is obligatory under Section 72, subsection (3)(b), that a local authority must carry out the necessary consultation and the necessary publicity, and the necessary notification (if any), before extending the period for which a PSPO has effect.

We consulted a small statutory group of stakeholders including the Business Improvement Districts (BIDS), the Police, The Mayor’s office, and Council Cabinet Member.

2.3 When we consulted

The consultation ran from Monday 27 July 2020 until Sunday 6 September 2020.

2.4 How we consulted

Council’s consultation webpage; online survey; through social media and contact with stakeholder groups.

2.4.1 Digital activity

Council’s consultation webpage; Facebook; Twitter

3. Responses from members of the public

3.1 Summary of results

In total, 187 responses were received via the online consultation and one email to the PPRSConsultations@lambeth.gov.uk inbox.

The following questions were asked:

- i) ***Thinking about the proposed restricted area shown in the map, how much of a problem, if at all, do you think street drinking and associated anti-social behaviour is to people living in, working in, or visiting Lambeth?***

76% of respondents felt that street drinking is a ‘significant problem’ (n = 97, 52%) or a ‘problem’ (n = 44, 24%);

Answer	Number	Proportion
A significant problem	97	52%
A problem	44	24%
Neutral	12	6%
Not much of problem	22	12%
No problem at all	12	6%
Grand Total	187	100%

ii) Has street drinking and associated anti-social behaviour affected you in either a positive or negative way over the last 12 months when you have been in Lambeth?

When asked whether street drinking had affected the respondent in either a positive or negative way, 73% of participants declared that their experience was either 'very negative' (n = 64, 34%) or 'negative' (n = 72, 39%);

Answer	Number	Proportion
Very negative	64	34%
Negative	72	39%
Neither positive nor negative	34	18%
Positive	6	3%
Very positive	11	6%
Grand Total	187	100%

iii) Have you personally been affected by anti-social behaviour which is linked to street drinking?

When asked whether the participant had been personally affected by ASB associated with street drinking 63% (n = 118) answered 'yes';

Answer	Number	Proportion
No	69	37%
Yes	118	63%
Grand Total	187	100%

iv) If yes, what exactly did those street drinking do? (conditional question)

112 respondents completed this question and based on participants answers a thematic list of behaviours has been produced.

The following table shows the common themes described by respondents and the number of mentions each theme received (note: some responses included multiple themes)

Behaviour Theme	Count of Mentions
Intimidating, anti-social and aggressive behaviour towards members of the public	67
Urinating and defecating on private and public property, sometimes in plain sight	49
Congregating and loitering in large groups, blocking the public highway, and creating noise nuisance	43
Littering, vandalism, and inappropriate use of public spaces	24
Cat calling and sexually inappropriate behaviour such as indecent exposure and public masturbation	14
Substance Misuse, excessive alcohol consumption and drug taking	11
Aggressive begging	7
Makes people want to stay indoors rather than use public spaces	3
Not social distancing	2
Street drinking associated with the homeless population	1

v) *If yes, how did the experience it make you feel? (conditional question)*

106 respondents completed this question and based on participants answers a thematic word analysis has been produced to show what feelings were expressed by Lambeth residents.

The following word art shows all the key words that respondents wrote, and the table shows all words mentioned more than three times (note: some responses included multiple words)

Key Word	No of Mentions
Unsafe	20
Intimidated	19
Uncomfortable	13
Angry	12
Threatened	11
Scared	10
Frustrated	7
Anxious	6
Sleep deprived	5
Disgusted	5
Frightened	5
Annoyed	4
Vulnerable	4
Nervous	4
Sad	4
Worried	3



vj) To what extent do you support or oppose the use of a PSPO to prohibit street drinking associated with anti-social behaviour in Lambeth?

On the question of whether or not respondents support the use of a PSPO for this purpose, 74% either 'strongly support' (n = 114, 61%) or 'support' (n = 24, 13%) the proposal to introduce a new PSPO for street drinking in Lambeth

Answer	Number	Proportion
Strongly support	114	61%
Support	24	13%
Neither support nor oppose	10	5%
Oppose	17	9%
Strongly oppose	13	7%
Did not answer	9	5%
Grand Total	187	100%

vii) Do you have any other comments regarding street drinking or the use of a Public Spaces Protection Order (PSPO)?

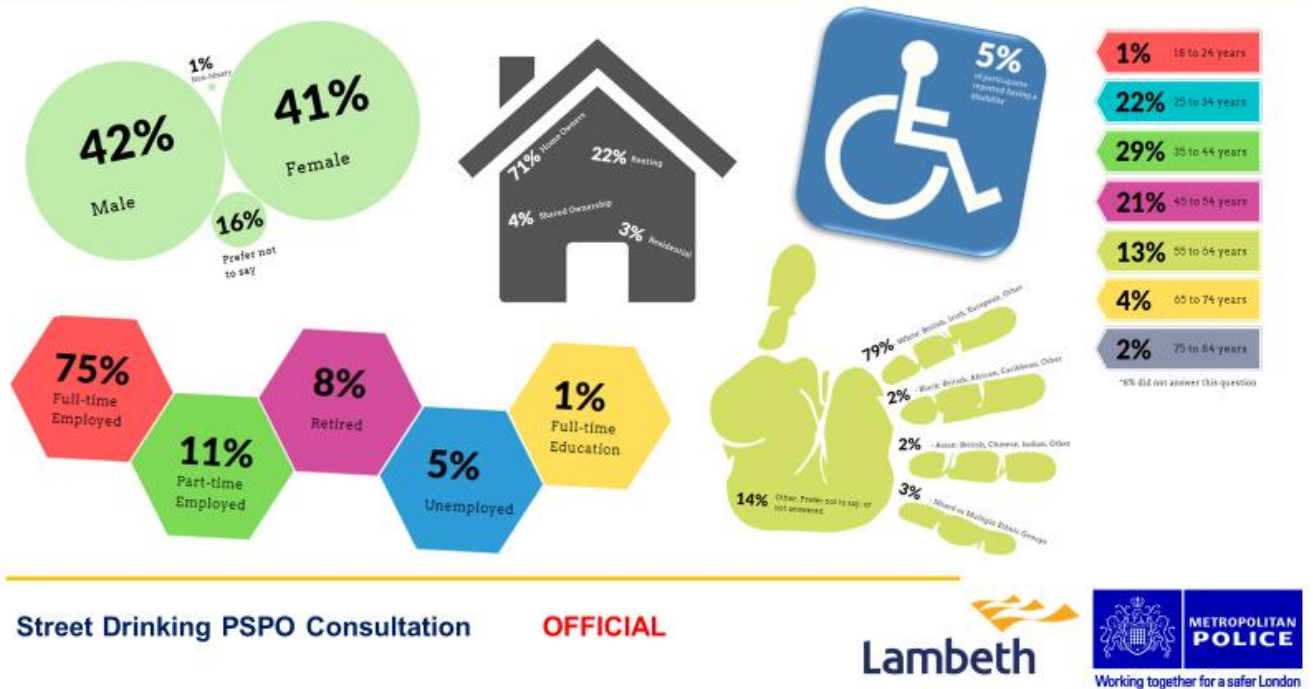
99 respondents completed this question and submitted further comments. Common themes drawn out from these responses included the following:

1. Request for more visible enforcement **(30 comments)**
2. Comments reiterating support for the PSPO proposals **(10 comments)**
3. Concern raised about unequal enforcement towards vulnerable, young, and homeless people rather than focusing on licensed premises exacerbating the problem, and lack of support services for vulnerable people **(8 comments)**
4. Area specific problem in Lambeth raised **(6 comments)**
5. Enforcement must be balanced, specifically with need to support economic initiatives **(6 comments)**
6. Licensing enforcement needs to accompany PSPO enforcement **(4 comments)**
7. The proposed methods will be ineffective **(4 comments)**
8. Support expressed for street drinking as a social activity **(3 comments)**
9. Littering enforcement and street cleaning must accompany PSPO enforcement **(3 comments)**

3.2 Summary of post code analysis and demographics

In respect of the equality, diversity, and inclusion data (EDI) –this consultation, along with other online consultations, has struggled to reach minority communities. Although this is a small sample, and was conducted during the COVID pandemic, digital representation of Black and Minority Ethnic (BAME) communities is not present and in sufficient numbers in this consultation. Corporately the Council needs to do more to support digital inclusion for more equitable representation across all communities.

Demographics of participants



4. Next steps

The report will be submitted to the Strategic Director of Resident Services, Bayo Dosunmu together with a final Equalities Impact Assessment (EQIA) and covering report making final recommendations on the preferred approach.